

# APS-AER (Model B)

Fully Automatic Non-mydratiac Fundus Camera

- All in one design
- Fully touch screen controlled



## *Product*

---

## *Features*

All in one design, compact and space-saving

Touch screen control: non-professionals can operate easily without professional training

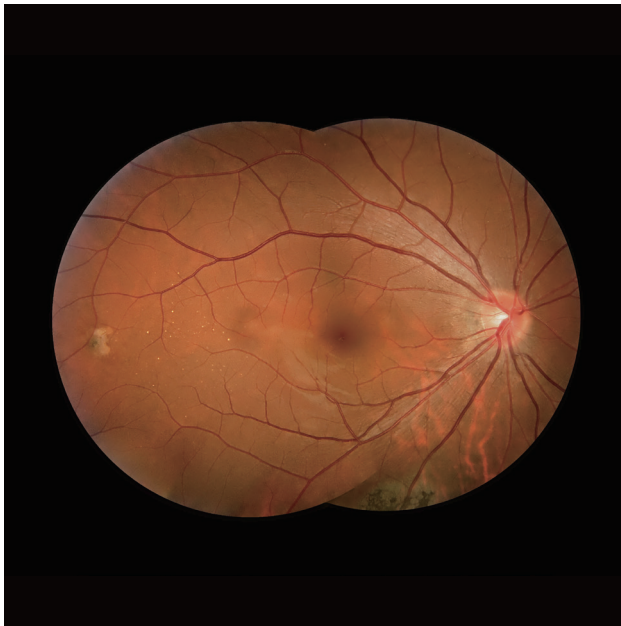
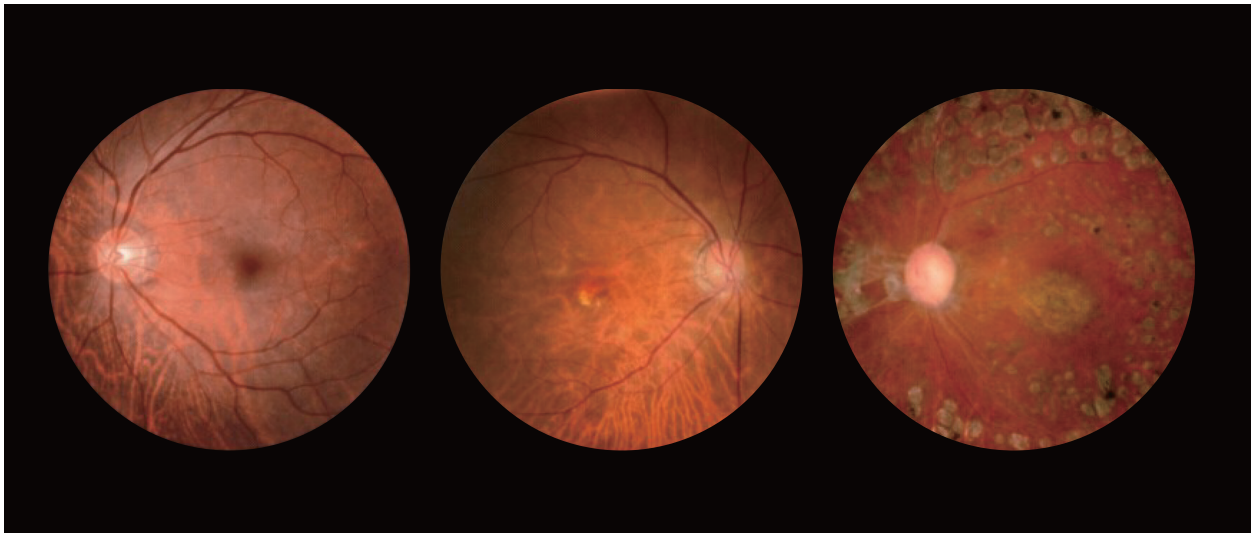
One-click switching in Manual or Automatic

Automatic flash&imaging and automatic images stitching

Automatic switching according to pupil size

[www.kanghuaa.com](http://www.kanghuaa.com)

[kanghua@kanghuaa.com](mailto:kanghua@kanghuaa.com)



High quality optic and imaging system, ensure image fidelity, present the details of the fundus ,to provide reliable diagnostic evidence.

Operate quickly and easily: achieve images of double eyes within 30 seconds

## Technical Specification

---

Camera resolution: 24.1 Mega Pixel

Field of view: Up to 53°

Non-mydratic: Yes

Minimum pupil size: 3.3 mm

Alignment: Two Dots

Function: Color Fundus

Light source: Infrared LED

Diopter compensation:  $\geq \pm 15D$

Focus Mode: Auto Focus&Manual Focus

Working distance: 42mm $\pm$ 2mm